



WHEN YOU KNOW THE DIFFERENCE™

pure
Newmar.



Enjoy the spaciousness. There's enough storage for parties and casual gatherings, with your full size, three-door, French style stainless steel refrigerator* with pull-out freezer.

**optional*



(left) Dutch Star's kitchen details make meals a source of pleasure – like a Corian countertop and backsplash with glass tile inserts and hand glazed Manhattan Maple hardwood cabinets*.

**optional finish*

(far left center)

Intimate meals are elegant and easy on your polished Corian tabletop with built in hardwood storage and buffet shelf. And with a hidden leaf, your table seats up to four.

THE WORLD knows Dutch Star for its remarkable Newmar craftsmanship. It's in every detail, from its fully appointed coach to its heavy duty 400 horses of diesel power. That's why Dutch Star is the standard by which quality diesel motor homes are judged. Isn't it time you had one in your life?

Your Dutch Star's gorgeous main living space is set off with traditional design touches. Polished porcelain flooring, newly designed window treatments and polished solid Corian® countertops make for a place you can really call home. So ease back at the end of the day. The luxury of your Ultralux leather-covered Flexsteel® lounges awaits.

a haven,
no matter
where you are.



ON THE ROAD or at rest,
you'll luxuriate in your fully
appointed Dutch Star
bedroom suite, hand
finished touches, convenient
storage and a complete
entertainment system.



Rest easy. A roomy king size bed with radius
corner mattress, surrounded by solid wood
nightstands with polished Corian tops make your
Dutch Star bedroom an oasis of relaxation.*



(far bottom left) Dutch
Star's spa-like
bathroom features
a polished Corian
counter top – with
an integrated bowl
–and a Corian
backsplash with
decorative glass
inserts. And you'll
relax in your extra
roomy shower,
fitted with a radius
glass door.

(far top left) Your
bedroom becomes a
theater where you
can put your feet up,
with a 32" Sony® TV
with DVD player.
Isn't it time for a nap?



power, fit,
and finish.

YOU'RE TOTALLY in control with this high test Dutch Star cockpit. From here, you can see where you're going – and what's behind you. Steering is a breeze, and on top of that, there are push button controls right at your fingertips.



Easy handling is standard with Comfort Drive™

Steering. Your VIP® Smart Wheel features easy-to reach controls right on the wheel and color GPS and rear view monitors that give you excellent visibility.

Now movie night can move outdoors. With Dutch Star's new optional external Sony® 40" LCD flatscreen TV/entertainment center with Sony AM/FM radio, CD player and two speakers. The television, mounted on an adjustable arm on the inside wall of the coach, can be accessed easily through a secure panel.



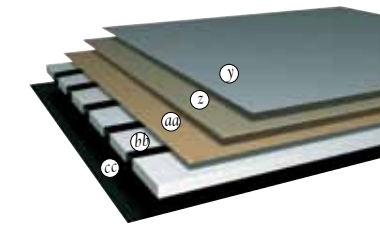
Dutch Star. quality construction.

NEWMAR TOTAL COMFORT™ CENTRAL AIR CONDITIONING
Experience RV air conditioning just like that found in site-built homes. Newmar's Total Comfort Central Air Conditioning is actually two separate, fully ducted systems: one to distribute incoming cool air, the other to quickly and effectively remove warm air from every living area.

PROTECTED C-CHANNELS
To keep the electrical wiring that runs through holes in the aluminum-frame C-channels from chafing, each hole is ringed with a plastic grommet.

SIKAFLEX®
Used throughout Newmar construction, Sikaflex elastic adhesive is one of the strongest bonding agents on the market today. It also serves as a sealant against air and water. And it helps dampen both sound and vibration.

16" ON-CENTER FRAMING
Just like a fine site-built residential home, your Newmar home is framed 16 inches on center, which allows the best placement of outlets, switches and other components.



Ceilings : R-value=16

- a. BriteTEK™ Roof (optional one-piece fiberglass roof)
- b. 9mm Wood Decking
- c. Fiberglass Batten Insulation
- d. A/C Ducting
- e. Aluminum Roof Truss
- f. Kraft Paper Vapor Barrier
- g. 58" Bead Foam
- h. 3/16" Panel
- i. Padded Vinyl Overlay

Walls : R-value=11

- j. 3/16" Plywood Interior Wall
- k. 58" Bead Foam
- l. Kraft Paper Vapor Barrier
- m. Fiberglass Batten Insulation
- n. 3/16" Plywood Exterior Wall
- o. Composite One-piece Gelcoat Exterior Sidewall
- p. 16" On-center Aluminum Framing with 3 1/2" Header

Flooring : R-value=16

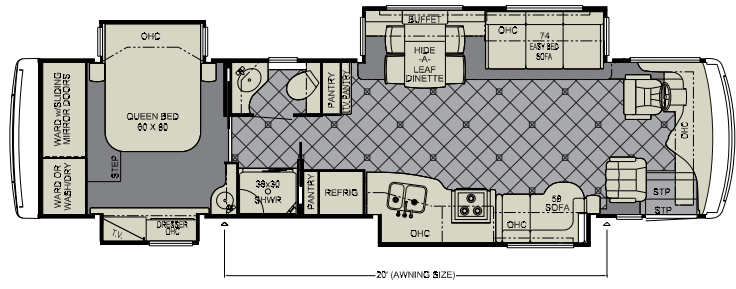
- q. Carpet/Tile
- r. Carpet Padding
- s. 58" Floor Decking
- t. Fiberglass Batten Insulation
- u. 2" x 3" Wood Framing
- v. Polyethylene Moisture Barrier
- w. Foam Panels (Noise Protection)
- x. Aluminum Ducting

Basement : R-value=4 (included in Floor R-value)

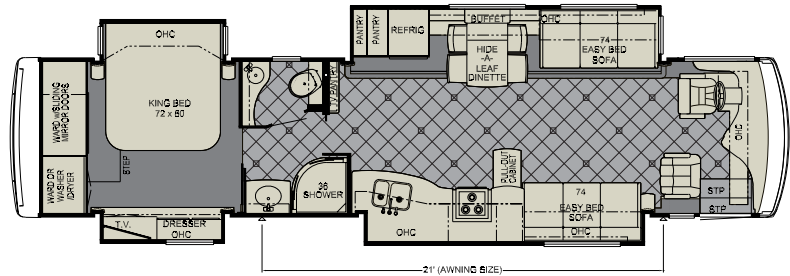
- y. Cargo Liner
- z. 38" Floor Decking
- aa. 3/16" Luan Panel
- bb. 1 1/2" Bead Foam
- cc. Aluminum Sheeting (Prevents Distortion)

1. 13.5M Penguin™ Heat Pump Central Air Conditioners (2)
2. One-piece Windshield
3. Coated Aluminum Wheels
4. Double-pane Tinted Safety-glass Windows
5. Side-hinged Baggage Doors with Optional Pullout Tray

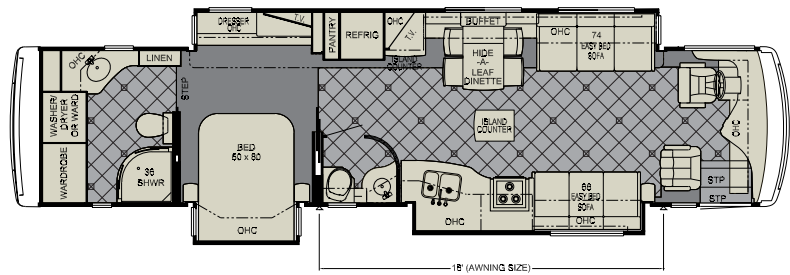




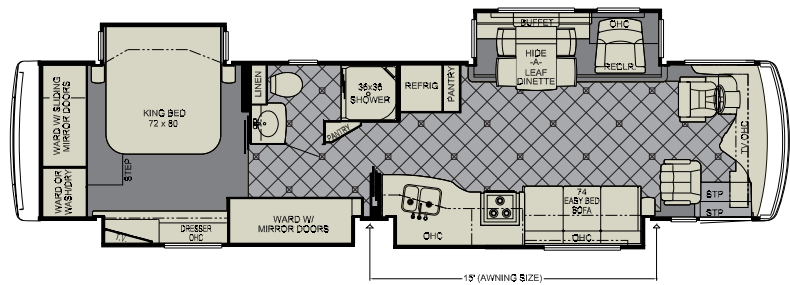
3734



4020T



4034T



4043T



Dutch Star.
to know it
is to love it.



Coastal Cherry



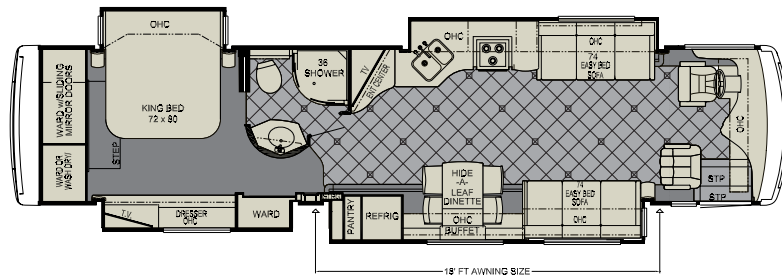
Baltic Beech



Manhattan Maple Glaze

DUTCH STAR'S floor plans and finishes* create a wide collection of choices for even the most discerning eye. No matter what your tastes, you'll find a decor package and layout that's just right.

**Wood finishes are interchangeable with any decor package.*



4086T



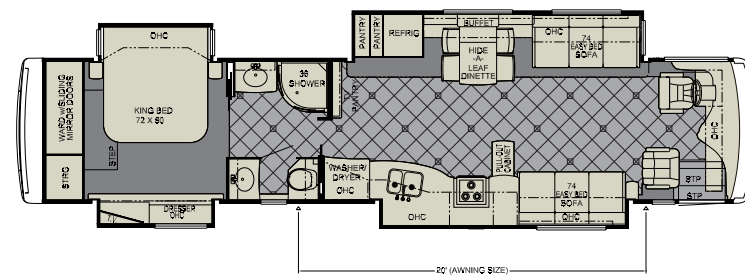
Flax



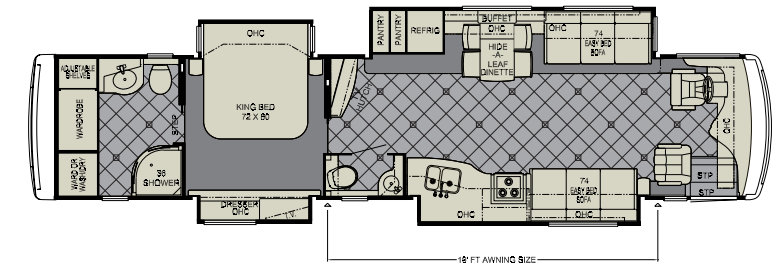
Shadow



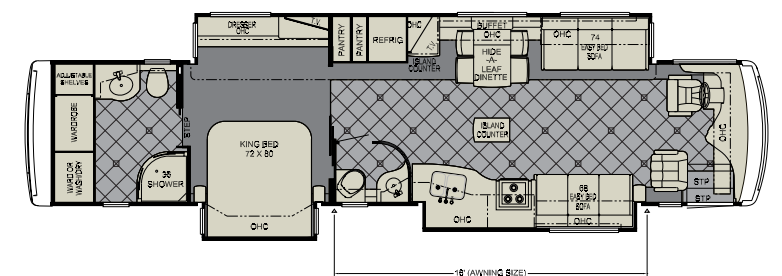
Truffle



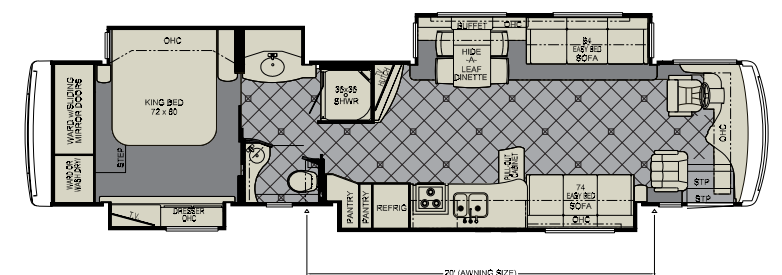
4324



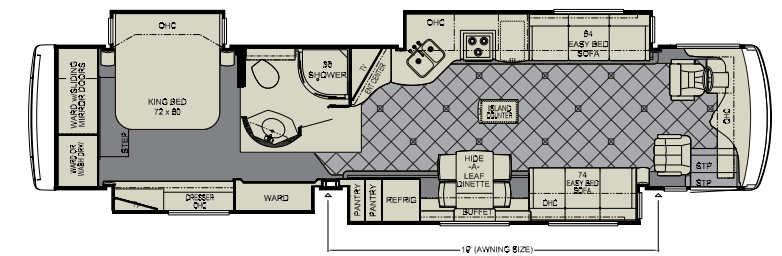
4336



4344



4353



4386

standard features and options

2011 STANDARD FEATURES

CHASSIS FEATURES

- Freightliner® Chassis
- Cummins® ISL 400 Hp
- Two Stage Compression Brake
- Cruise Control
- Comfort Drive™ Steering With Adjustable Control
- Manual Tilt and Telescope Steering Column with VIP Smart Wheel
- Accu Brite® Aluminum Wheels
- Recessed Fuel Fills with Crossover to Fill from Either Side
- Back-Up Alarm
- Anti-Lock Braking System
- Electronic Chassis Information Center in Dash
- Electric Leveling Jacks with Automatic Control on 37ft floorplans*
- Hydraulic Leveling Jacks with Single Touch Control on 40-43ft floorplans
- Hydraulic Leveling Jacks with Single Touch Control on 37ft floorplans

AIR CONDITIONING & HEATING

- Two 13.5M Penguin™ Heat Pump Central Air Conditioners
- Hydronic Zone Propane Heating System
- Wall Mounted Heating and Air Conditioning Sensors

APPLIANCES & ACCESSORIES

- 30" Convection Microwave
- Three-Burner Cooktop with Piezo Ignition
- Norcold® 10 Cu.Ft. Refrigerator
- Black Panel Refrigerator Front
- One-Piece Washer/Dryer Prep
- Sony® 40" or 46" LCD TV in Living Area
- Sony® 32" LCD TV in Bedroom
- Sony® DVD Player in Bedroom
- AM/FM Dash Radio with MP3 Adapter and CD Player
- Sony® Surround Sound System with Single Disc DVD Player
- High Definition Wiring
- Rearview Color Monitor System
- Two Bedroom Radio Speakers with On/Off Switch

CABINETS & FURNITURE

- Baltic Beech Cabinetry With Raised Panel Glazed Doors
- Hidden Leaf Dinette Table with Four Chairs (Two Fixed, Two Folding)*
- Polished Corian® Countertop in Kitchen with Undermounted Acrylic Sink and Flush Sink Covers
- Corian® Countertop in Bathroom with Integrated Bowl
- Corian® Countertops Throughout
- Pullout Mobile Island Kitchen Base Cabinet *
- Residential Style Full Extension Ball Bearing Drawer Guides
- Flexsteel® Ultralux Leather Furniture

- Driver/Passenger Seats with Six-Way Power, Power Lumbar, Ergo-Flex Arms and Passenger Footrest
- King Bed with Radius Cornered Mattress *
- Pullout Step-stool with Storage in Bathroom Cabinet

ELECTRICAL FEATURES

- 8.0 Kw Cummins Onan® Diesel Quiet Series Generator
- 50 Amp Electrical Service with Flexible Cord
- Four 6 Volt House Batteries on Pullout Tray
- 5 Watt Solar Panel
- 2000 Watt Inverter
- Midship Side Turn Signals
- Fluorescent Lights in Ceiling and Under Overhead Cabinets
- Lighted Wardrobes
- ICC Light Flasher Switch
- Monoplex Water Pump Switches Located in Bathroom, Kitchen and Exterior Near Gate Valves

EXTERIOR FEATURES

- Full-Paint Masterpiece Finish™ with Front Protective Film
- One-Piece Bonded Windshield
- Convex Exterior Mirrors with Remote Control, Defrost and Turn Signals
- Power Flush Stepwell Cover
- Rear Hitch for Towing Car with Two Extra 14 Gauge Wires
- Rear Ladder

INTERIOR FEATURES

- Padded Vinyl Ceiling
- Day/Night Pleated Window Shades and Lambrequins
- Mini Blinds in Kitchen and Bathroom
- Manual Duo Day/Night Privacy Shades (Windshield and Driver/Passenger Side Windows)
- Porcelain Floor With Tile Inserts in Kitchen, Bathroom and Living Area
- Deluxe Carpeting with High-Density Padding in Living Room and Bedroom
- Power-activated Sun Visors

PLUMBING & BATH FEATURES

- Demand Water System with SHURflo® Pump
- Water Heater Bypass System
- Radius Shower Glass Shower Door
- Monitor Panel
- Water Pump Switches Located in Bathroom, Kitchen and Exterior Near Gate Valves
- Exterior Shower

CONSTRUCTION FEATURES

- BriteTEK™ Roof with 9MM Decking
- Gelcoated Fiberglass Exterior Sides
- Gelcoated Fiberglass Front & Rear Caps
- Aluminum-Frame Sidewalls & Roof Construction, 16" on Center

- 5/8" Foam Insulation Laminated in Sidewalls & Ceiling
- Roof R-Value Rating: 16
- Sidewall R-Value Rating: 11
- Floor R-Value Rating: 16
- Basement R-Value Rating: 4 (R-Value included in with Floor R-Value)

WINDOWS, AWNINGS, & VENTS

- Double-Pane Tinted Safety-Glass Windows
- Fan-Tastic® Vent with Rain Sensor in Kitchen and Bathroom Areas
- A & E® 9000 Side Awning

2011 OPTIONAL FEATURES

CHASSIS FEATURES

- Hydraulic Leveling Jacks with Single Touch Control on 37 ft. floorplans

AIR CONDITIONING & HEATING

- Oasis® Hydronic Zone Diesel Heating System

APPLIANCES & ACCESSORIES

- Three-Burner Range with Oven and Piezzo Ignition
- Dometic® 12 Cu.Ft. Four-Door Refrigerator with Icemaker and Water Dispenser
- Norcold® 12 Cu.Ft. Four-Door Refrigerator with Icemaker and Water Dispenser
- GE Stainless Steel Residential Refrigerator with Icemaker and Water Dispenser, includes 2000 Watt Pure Sine Inverter & 2 Extra Batteries
- Icemaker Added to Refrigerator *
- Norcold® Freezer on Pullout Tray
- One-Piece Washer/Dryer *
- Two-Piece Washer/Dryer *
- Sirius Satellite Radio Capability (Does not include monthly subscription)

- Dash Radio with Portable TomTom® Navigation System
- External Entertainment Center in Sidewall with 40" Sony® LCD TV
- External Entertainment Center in Storage Compartment with 32" Sony® LCD TV
- Relocation of Living Area TV to Entertainment Center *
- Automatic Satellite without Receiver
- In-Motion Satellite without Receiver
- Sideview Cameras
- CB Radio with Antenna
- CB Antenna
- Central Vacuum with Deluxe Tool Kit
- Pre-programmed Universal Remote Control

CABINETS & FURNITURE

- Coastal Cherry Hardwood Cabinets
- Manhattan Maple Hardwood Cabinets with Glazed Doors
- Ultralux Leather Free Standing Swivel Rockers *

- Hide-A-Bed Sofa with Air Mattress *
- Ultralux Leather Combination U-Dinette and Sofa *
- Bunk Beds in Place of Wardrobe *
- Heated Driver and Passenger Seats
- Booth Dinette
- Ultralux Leather Euro-style Booth Dinette *
- Combination Desk/Dinette Table with Two Fixed and Two Folding Chairs
- Round Hardwood Dinette Table with Two Fixed and Two Folding Chairs and Larger Dinette Window *
- Storage Shelves Recessed into Rear Cap of Rear Wardrobe Floorplans
- Queen Bed *
- Sleep Number Premier Air® Mattress

ELECTRICAL FEATURES

- Solar Prep
- Recessed Docking Lights
- Pre-Wire for Freezer
- Halogen Lighting
- Energy Management System

EXTERIOR FEATURES

- Large Chrome Exterior Mirrors
- Large Storage Tray with Access from One Side or Either Side*
- Power locking Baggage Doors, Keyless Entry with Door Bell and Touch Pad

INTERIOR FEATURES

- Solid Surface Kitchen Sinks
- Floor Tile Extended into Bedroom Area*

PLUMBING & BATH FEATURES

- Assist Handle in Tub/Shower
- Fold-Down Shower Seat
- 110 Volt Heat Pads for Holding Tanks

CONSTRUCTION FEATURES

- One-Piece Molded Fiberglass Roof with 9mm Decking
- Power Lock Arms on All Slideout Rooms

WINDOWS, AWNINGS, & VENTS

- A & E® 9000 Bedroom and Slideout Window Awning
- A & E® Oasis Manual Front Entrance Door Awning
- A & E® Oasis Power Front Entrance Door Awning
- A & E® Weather Pro Side Awning 0

floorplan specifications

Floorplan	App. Overall Length	Width	App. Overall Height	Interior Width	Interior Height	Grey	Sewage	Water	Lp	Furnace
3734	37' 11"	101.5"	12' 5"	95.5"	84"	65 gal.	45 gal.	105 gal.	32 gal.	55,000 Btu
4020T	40' 9"	101.5"	12' 5"	95.5"	84"	65 gal.	45 gal.	105 gal.	32 gal.	55,000 Btu
4034T	40' 9"	101.5"	12' 5"	95.5"	84"	65 gal.	45 gal.	105 gal.	32 gal.	55,000 Btu
4043T	40' 9"	101.5"	12' 5"	95.5"	84"	65 gal.	45 gal.	105 gal.	32 gal.	55,000 Btu
4086T	40' 9"	101.5"	12' 5"	95.5"	84"	65 gal.	45 gal.	105 gal.	32 gal.	55,000 Btu
4324	42' 9"	101.5"	12' 6"	95.5"	84"	65 gal.	45 gal.	105 gal.	32 gal.	55,000 Btu
4336	42' 9"	101.5"	12' 6"	95.5"	84"	65 gal.	45 gal.	105 gal.	32 gal.	55,000 Btu
4344	42' 9"	101.5"	12' 6"	95.5"	84"	65 gal.	45 gal.	105 gal.	32 gal.	55,000 Btu
4353	42' 9"	101.5"	12' 6"	95.5"	84"	65 gal.	45 gal.	105 gal.	32 gal.	55,000 Btu
4386	42' 9"	101.5"	12' 6"	95.5"	84"	65 gal.	45 gal.	105 gal.	32 gal.	55,000 Btu

chassis specifications

Floorplan	Engine Hp	Axle Ratio	Fuel Cap	Wheelbase	Front GAWR*	Rear GAWR*	TAG GAWR*	GVWR*	GCWR*	Appr. UVW	Appr. NCC
3734	400	4.63	100 gal.	242"	14,600 lb.	20,000 lb.	0	34,600 lb.	44,600 lb.	28,500 lb.	6,100 lb.
4020T	400	4.63	100 gal.	252" + TAG	14,600 lb.	20,000 lb.	10,000 lb.	44,600 lb.	54,600 lb.	31,200 lb.	13,400 lb.
4034T	400	4.63	100 gal.	252" + TAG	14,600 lb.	20,000 lb.	10,000 lb.	44,600 lb.	54,600 lb.	31,300 lb.	13,300 lb.
4043T	400	4.63	100 gal.	252" + TAG	14,600 lb.	20,000 lb.	10,000 lb.	44,600 lb.	54,600 lb.	30,900 lb.	13,700 lb.
4086T	400	4.63	100 gal.	252" + TAG	14,600 lb.	20,000 lb.	10,000 lb.	44,600 lb.	54,600 lb.	31,000 lb.	13,600 lb.
4324	400	4.63	100 gal.	276" + TAG	14,600 lb.	20,000 lb.	10,000 lb.	44,600 lb.	54,600 lb.	31,200 lb.	13,400 lb.
4336	400	4.63	100 gal.	276" + TAG	14,600 lb.	20,000 lb.	10,000 lb.	44,600 lb.	54,600 lb.	32,900 lb.	11,700 lb.
4344	400	4.63	100 gal.	276" + TAG	14,600 lb.	20,000 lb.	10,000 lb.	44,600 lb.	54,600 lb.	33,600 lb.	10,978 lb.
4353	400	4.63	100 gal.	276" + TAG	14,600 lb.	20,000 lb.	10,000 lb.	44,600 lb.	54,600 lb.	32,700 lb.	11,900 lb.
4386	400	4.63	100 gal.	276" + TAG	14,600 lb.	20,000 lb.	10,000 lb.	44,600 lb.	54,600 lb.	32,300 lb.	12,300 lb.

Lengths, heights, widths and dry weights are approximate. Weight will vary based on optional equipment added to the above base weight.

GAWR: Gross Axle Weight Rating is the maximum permissible weight for an axle.

GVWR: Gross Vehicle Weight Rating is the maximum permissible weight for a fully loaded motor coach.

GCWR: Gross Combination Weight Rating is the value specified by the manufacturer of the vehicle as the maximum allowable loaded weight of this motor coach and any towed trailer or towed vehicle.

UVW: Unloaded Vehicle Weight is the weight of this motorcoach as built at the factory with full fuel, engine oil and coolants. The UVW does not include cargo, fresh water, propane gas or dealer-installed accessories.

NCC: Net Carrying Capacity is the maximum weight of all occupants, including the driver, personal belongings, food, fresh water, waste water, propane gas, tools, tongue weight of towed vehicle, dealer-installed accessories, etc., that can be carried by the motorcoach.

*Specifications supplied by the chassis manufacturer.

*CHECK WITH DEALERSHIP ON FLOORPLAN AVAILABILITY AND COMPLETE LISTING OF FEATURES.



peace of mind is built in.

Established over 40 years ago, Newmar is an innovator and leader in the RV manufacturing industry. Its quality craftsmanship is recognized nationally. The Newmar dealer network spans across the United States and Canada.

Newmar Corporation • 355 N. Delaware St • PO Box 30
Nappanee IN 46550-0030 • 574-773-7791 • Fax 574-773-2895

The Newmar Kountry Klub is an exclusive club for owners of fine Newmar products that offers many advantages and benefits to its members. Learn more at www.newmarkountryklub.com. Please be our guest for a Newmar factory tour. Call 1-800-860-0086 to learn more.

WWW.NEWMARCORP.COM



WHEN YOU KNOW THE DIFFERENCE.™

(Please affix dealer stamp in this area.)